

MONTHLY MEMBERSHIP PROGRESS REPORT

District 325B1

Results as of: 6/30/2020

GMT:

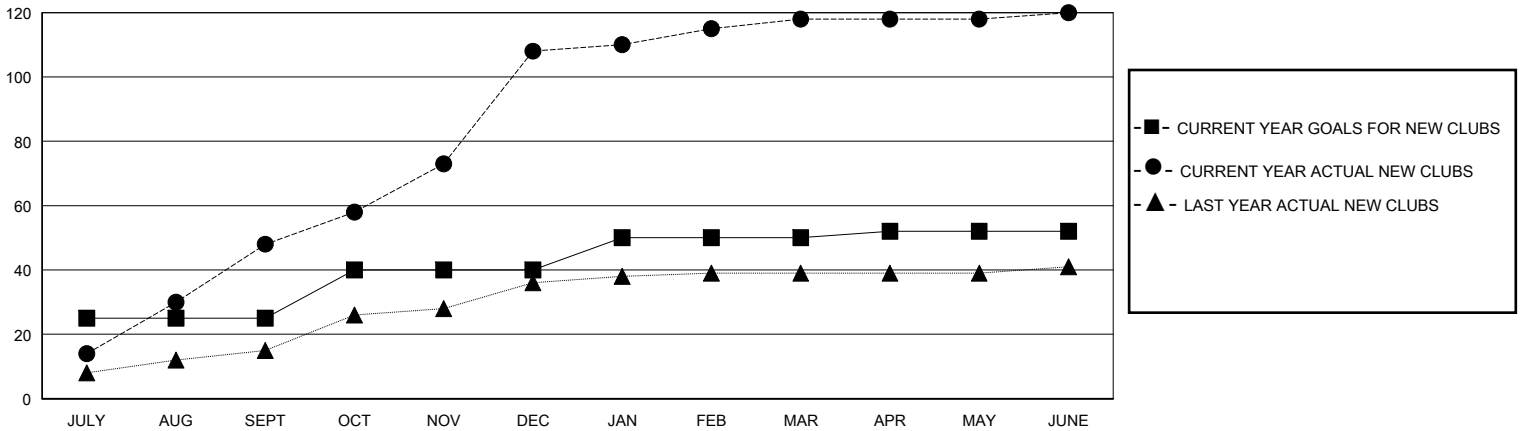
LOCATION NEPAL

GMT CA

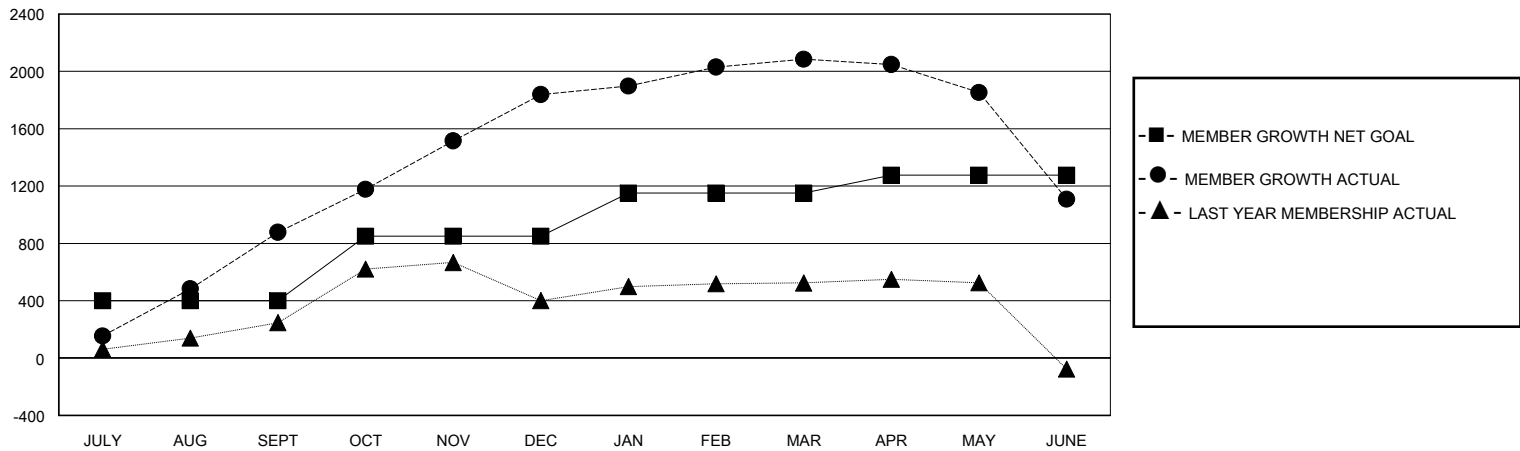
Clubs			
RESULTS FOR 2019-2020			
QUARTER	NEW CLUB GOAL	NEW CLUBS	DROPPED CLUBS
JULY/AUG/SEPT	25	48	0
OCT/NOV/DEC	15	60	3
JAN/FEB/MAR	10	10	1
APR/MAY/JUNE	2	2	0

Members			
RESULTS FOR 2019-2020			
QUARTER	MEMBER GROWTH NET GOAL	MEMBER GROWTH ACTUAL	DROPPED MEMBERS ACTUAL (including transfers)
JULY/AUG/SEPT	400	1357	440
OCT/NOV/DEC	450	1568	600
JAN/FEB/MAR	300	417	160
APR/MAY/JUNE	125	124	1,091

GOALS AND ACTUAL NEW CLUBS CUMULATIVE



GOALS AND ACTUAL MEMBERS CUMULATIVE



DROPPED CLUBS: 4

309 CLUBS OF 483 ADDED 1 OR MORE NEW MEMBERS

GENDER DISTRIBUTION

MALE 8,711 (74.04%)
FEMALE 3,055 (25.96%)

DROPPED MEMBERS

DECEASED	9
CLUB CANCELLED	72
OTHER	2,208
TOTAL	2,289

[CLICK HERE FOR CUMULATIVE MEMBERSHIP DATA](#)

TOTAL FAMILY UNIT MEMBERS	7,978
FAMILY MEMBERS PAYING HALF DUES	5,056